



## Lancer Square London

1  1 

Step into style with this chic 1-bedroom apartment on the ground floor of a sleek, modern building in the heart of Kensington?complete with a fully fitted kitchen, stylish bathroom, and a private balcony to soak up the Kensington charm!Lancer Square contains 36 bespoke apartments, all of which are finely crafted to the the highest level of luxury. It has the benefit of a 24 hour concierge, residents' swimming pool, spa, massage room, studio, and gym, a landscape designed courtyard, valet parking, as well as a grand entrance and lifts throughout the building.Set adjacent to Kensington Palace Green, the development is able to benefit from the green space of Kensington Gardens and Hyde Park, as well as the boutiques, cafes, restaurants and bars of Kensington Church Street and High Street Kensington. For those looking to commute to the City, High Street Kensington Station is just 0.2 miles away with regular underground trains and buses.

£ 1,650 per week

**Building Size** : 749 Sqft

**View** : <https://www.rickmanproperties.com/8178361>



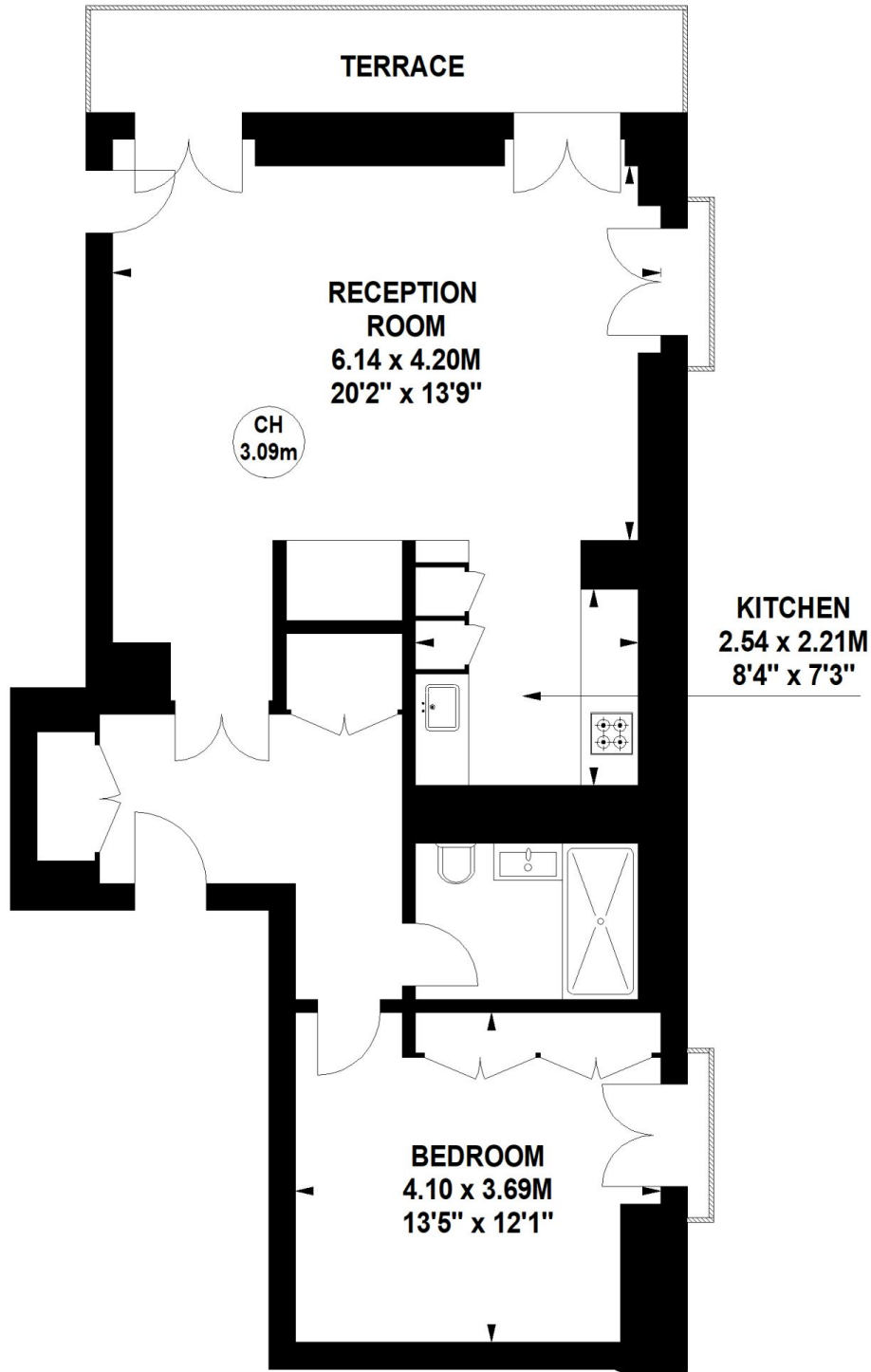
**Bianca Conroy**  
07947 514 483

# Lancer Square, W8

Approximate Gross Internal Area

69.58 sq m / 749 sq ft

Key :  
CH - Ceiling Height



## Ground Floor

Not to scale, for guidance only and must not be relied upon as a statement of fact.  
All measurements and areas are approximate only