

Lancer Square London

2  2 

Discover this stunning, modern 2-bedroom apartment on the first floor of a contemporary building in the heart of prestigious Kensington! This beautifully designed home offers two spacious bedrooms, two sleek bathrooms, a fully fitted kitchen, and a stylish living area that opens onto a private balcony. Lancer Square contains 36 bespoke apartments, all of which are finely crafted to the the highest level of luxury. It has the benefit of a 24 hour concierge, residents' swimming pool, spa, massage room, studio, and gym, a landscape designed courtyard, valet parking, as well as a grand entrance and lifts throughout the building. Set adjacent to Kensington Palace Green, the development is able to benefit from the green space of Kensington Gardens and Hyde Park, as well as the boutiques, cafes, restaurants and bars of Kensington Church Street and High Street Kensington. For those looking to commute to the City, High Street Kensington

£ 4,000 per week

Building Size : 1468 Sqft

View

: <https://www.rickmanproperties.com/8178345>

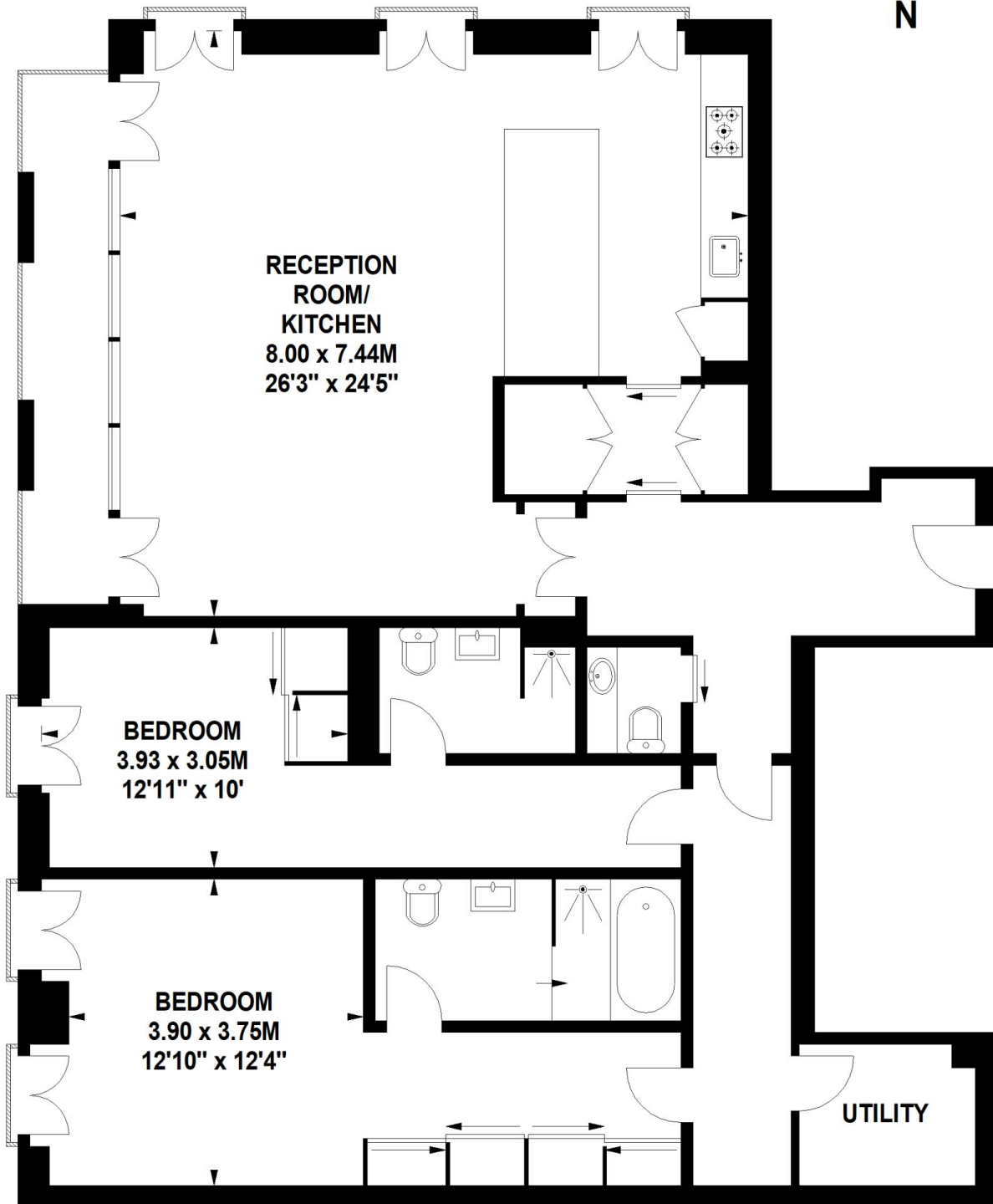


Bianca Conroy
07947 514 483

Lancer Square, W8

Approximate Gross Internal Area

136.38 sq m / 1468 sq ft



First Floor

Not to scale, for guidance only and must not be relied upon as a statement of fact.
All measurements and areas are approximate only