

### Lancer Square London

3  4 

This beautifully interior designed apartment has been finished to a very high standard. This third floor property comprises of an extremely light and spacious open plan reception room with plenty of space for entertaining, leading onto a balcony with views through the quiet development towards Kensington Palace Gardens. The reception room flows through to a very modern kitchen complete with high-spec appliances. There is a generously sized master bedroom with a couples' ensuite bathroom, and a further two double bedrooms, both of which are also ensuite. There is also a WC off the large hallway for guests. The apartment also benefits from a discreet utility room. As the property in question is situated the Kensington Palace Gardens side of the building, it also benefits from peace and tranquillity while still being adjacent to the central location of High Street Kensington. Lancer Square contains 36 bespoke

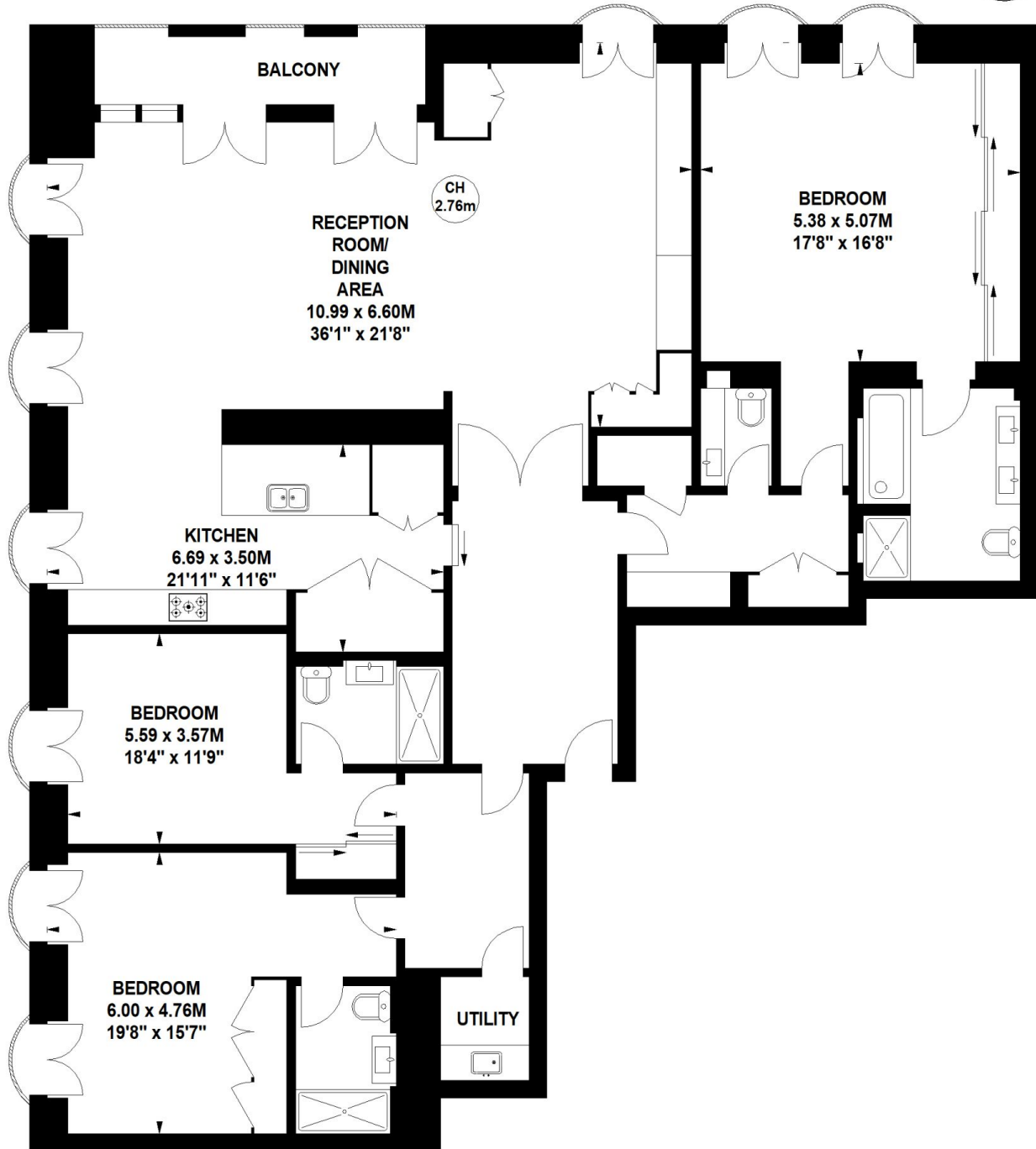
£ 8,000 per week  
**Building Size** : 2321 Sqft  
**View** : <https://www.rickmanproperties.com/8114123>

# Lancer Square, W8

Approximate Gross Internal Area

215.62 sq m / 2321 sq ft

Key :  
CH - Ceiling Height



## Third Floor

Not to scale, for guidance only and must not be relied upon as a statement of fact.  
All measurements and areas are approximate only