

## Colville Road Notting Hill

2  2 

This well proportioned two bedroom apartment benefits from a delightful living room with wooden floors throughout, modern kitchen, two double bedrooms, en-suite bathroom and further shower room. The property also retains many period features throughout along with an abundance of charm and character. Colville Road is in an attractive tree-lined street of pastel coloured period conversion properties located just off fashionable Westbourne Grove and around the corner from the Portobello Road. EPC - D, Council Tax - F

£ 3,358 per week

**Building Size** : 883 Sqft

**View**

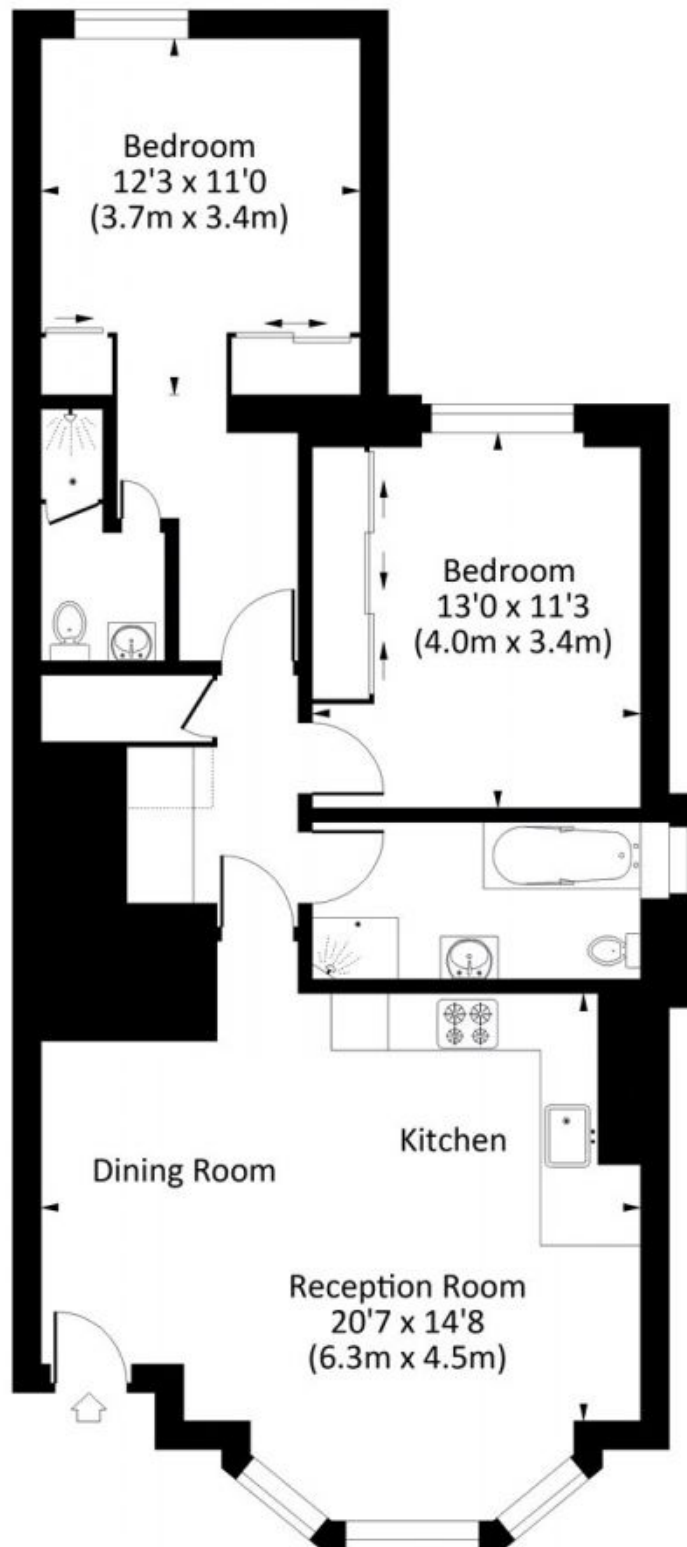
: <https://www.rickmanproperties.com/7817167>



**Viraj Patel**  
+44 7947 514483

# COLVILLE ROAD W11

Approx. gross internal area  
883 Sq Ft. / 82 Sq M.



GROUND FLOOR



All measurements are approximate and for illustration purposes only as defined by the RICS Code of Measuring Practice © 2014 Dowling Jones Design [www.dowlingjones.com](http://www.dowlingjones.com) 020 7610 9933