



Beaufort Gardens Knightsbridge

3  2 

Nestled within the picturesque tree-lined cul-de-sac of Beaufort Gardens, this exquisite 3-bedroom penthouse redefines urban living. Bathed in natural light and adorned with modern finishes, this residence offers a harmonious blend of contemporary elegance and timeless charm, not forgetting the added benefit of a west-facing terrace. This 1004 sq. ft. apartment harmoniously combines contemporary living with the allure of a prestigious, well-established neighborhood. It is a rare opportunity to experience the very best of London's luxury lifestyle. EPC Rating - C, Council Tax - H.

£ 900 per week

Building Size : 1004 Sqft

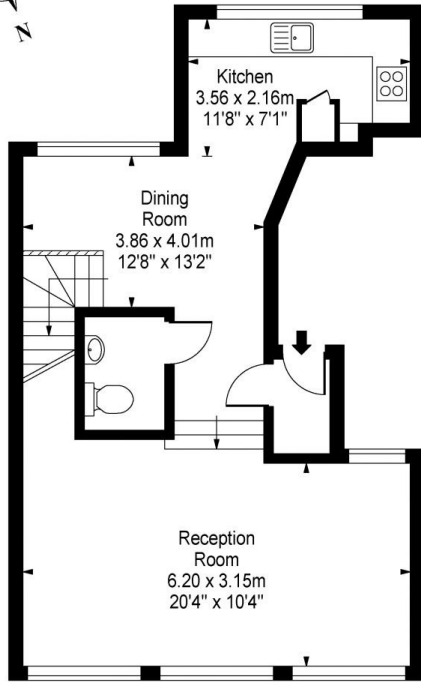
View

: <https://www.rickmanproperties.com/7784925>

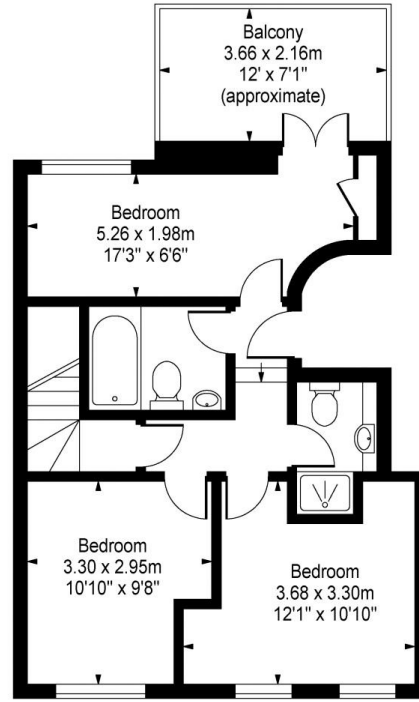


Viraj Patel MARLA
+44 7947 514483

Beaufort Gardens, SW3



Fourth Floor



Fifth Floor

Approx Gross Internal Area 1004 Sq Ft - 93.27 Sq M

This floor plan should be used as a general outline for guidance only and does not constitute in whole or in part an offer or contract. Any intending purchaser or lessee should satisfy themselves by inspection, searches, enquiries and full survey as to the correctness of each statement. Any areas, measurements or distances quoted are approximate and should not be used to value a property or be the basis of any sale or let.