



### Warwick Chambers Kensington

2  1 

2 Bedroom top floor flat (with a lift) located only moments away from Kensington High Street in a building that had the externals upgraded a couple of years ago and is now having the internals decorated. Great travel links and the amenities of the High Street, including Holland Park and the Design Museum. Comprising 2 bedrooms, 1 with ensuite shower room, south facing reception room, separate kitchen and bathroom. Well presented and with views over the surrounding area. No onward chain. Lease approx 105 years. EPC- D. Council tax E Service charge approx £2200 per annum.

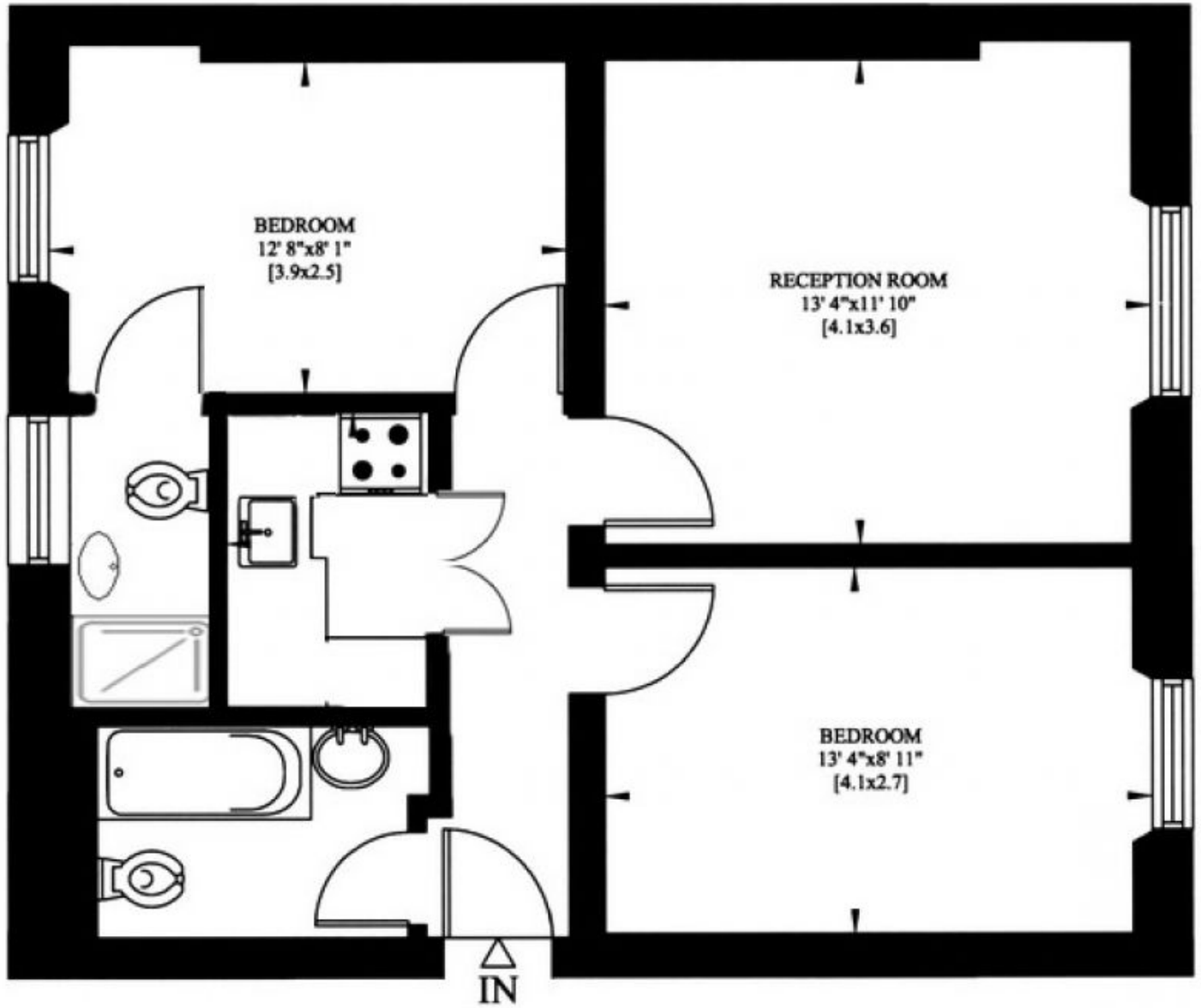
Guide Price £795,000

**View** : <https://www.rickmanproperties.com/7779166>



**Stuart Mills**  
**+44 7980 712798**

Gross Internal Area: 53 Sq. metres  
570 Sq. feet



FOURTH FLOOR