

Lancer Square London

1  1 

This modern flat consists of an open-plan kitchen/living room, one double bedroom, a high-spec marble bathroom, and ample storage throughout the property. The apartment is accessible by lift. Lancer Square contains 36 bespoke apartments, all of which are finely crafted to the the highest level of luxury. It has the benefit of a 24 hour concierge, residents' swimming pool, spa, massage room, studio, and gym, a landscape designed courtyard, valet parking, as well as a grand entrance and lifts throughout the building. Set adjacent to Kensington Palace Green, the development is able to benefit from the green space of Kensington Gardens and Hyde Park, as well as the boutiques, cafes, restaurants and bars of Kensington Church Street and High Street Kensington. For those looking to commute to the City, High Street Kensington Station is just 0.2 miles away with regular underground trains and buses.

£ 1,840 per week
Building Size : 719 Sqft
View : <https://www.rickmanproperties.com/7695499>

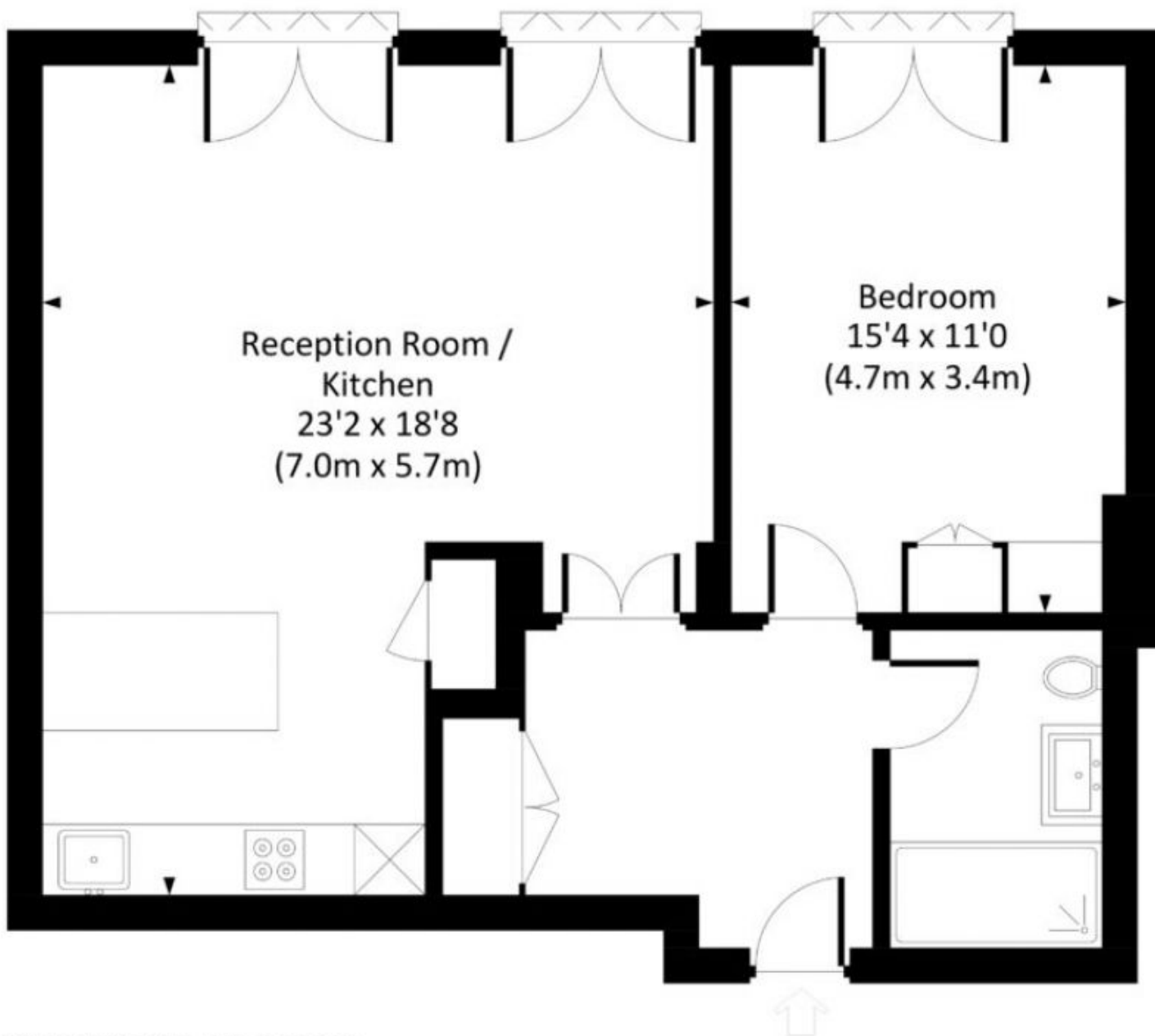


Viraj Patel
+44 7947 514483

LANCER SQUARE, W8

Approx. gross internal area

719 Sq Ft. / 66.8 Sq M.



SECOND FLOOR



All measurements have been made in accordance with RICS code of Measuring Practice which are approximate only and only for illustrative purposes. For the avoidance of doubt, Dowling Jones Design shall not be liable for any reliance on these measurements. © 2023 www.dowlingjones.com 020 7610 9933