



Clarendon Court Maida Vale

2  2 

Building Size : 870 Sqft
View : <https://www.rickmanproperties.com/7681162>

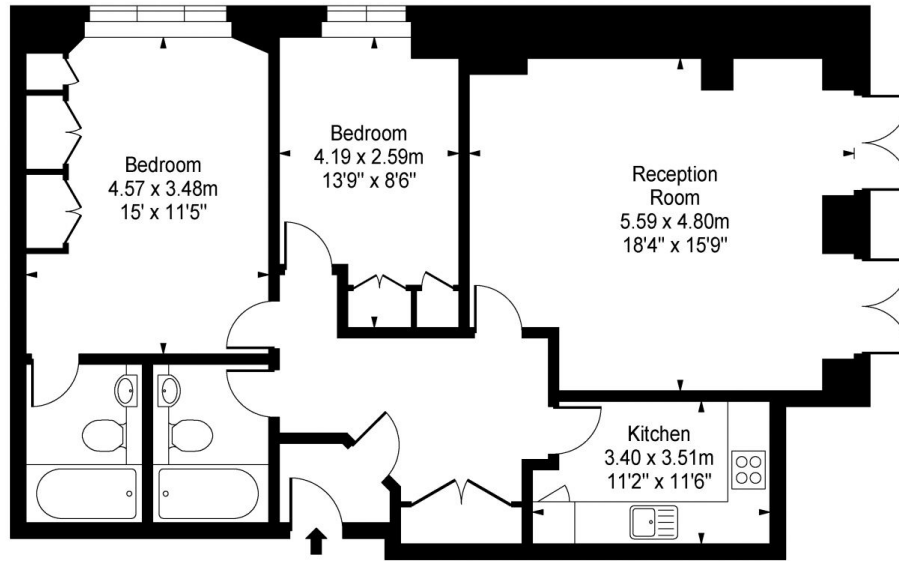


Viraj Patel
+44 7947 514483

A spectacular 2-bedroom, 2-bathroom lower ground floor apartment offering the ultimate in luxurious urban living. Situated in an exclusive building boasting 24-hour porters and secure underground parking, this residence promises a lifestyle of comfort and convenience. Maida Vale needs no introduction, renowned for its picturesque streets, charming cafes, and delightful boutiques. Enjoy leisurely strolls along the nearby canals or indulge in the vibrant cultural scene that the area has to offer. Excellent transport links provide easy access to London's most iconic landmarks and attractions with Warwick Avenue station (Bakerloo line) only 0.4 miles away, and 0.9 miles to Paddington Station (Bakerloo, Circle and District, Elizabeth, Hammersmith & City), with the National Rail service and the Heathrow Express.



Maida Vale, London, W9



Lower Ground Floor

Approx Gross Internal Area 870 Sq Ft - 80.82 Sq M

Measured in accordance with RICS guidelines. Every attempt is made to ensure accuracy
However all measurements are approximate.
The floor plan is illustrative purposes only and is not to scale