



Grosvenor Crescent Mews Knightsbridge

3  3 

View : <https://www.rickmanproperties.com/7244903>

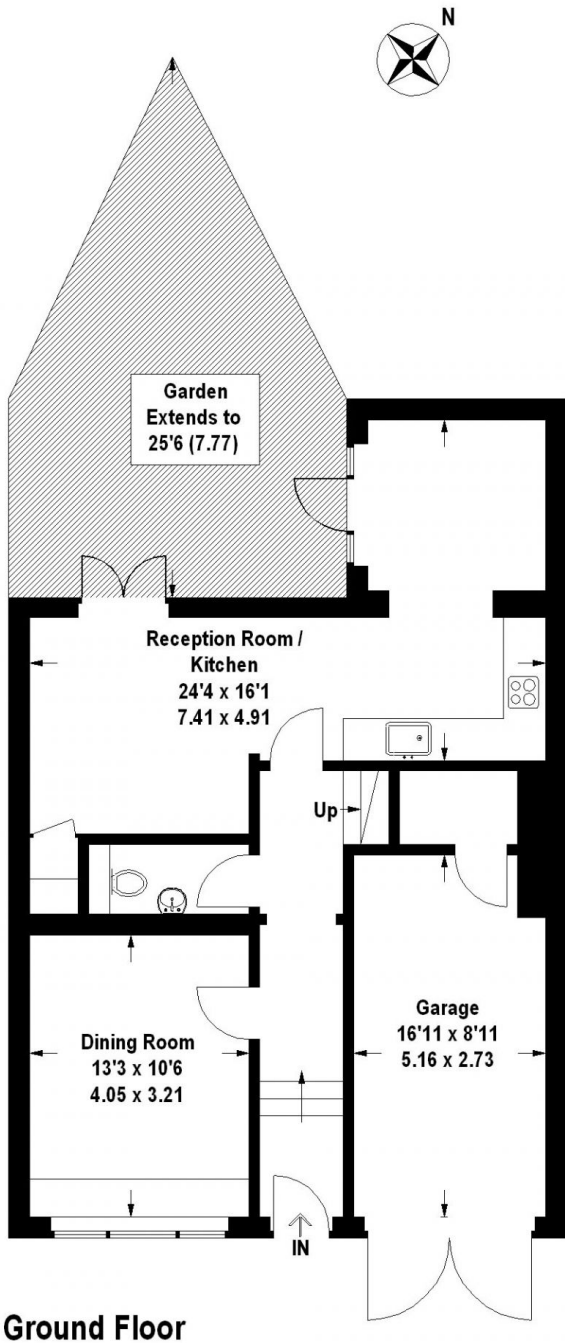
A spacious (2067 Sq ft) 3 bedroom mews house with a garden, in this secure, private, gated and portered mews in Belgravia. The ground floor comprises a large fully fitted kitchen/breakfast room with adjoining second reception room with doors out to a private garden. Separate formal dining room or Study and guest WC. On the first floor is the principle full width reception room, double bedroom with plenty of fitted wardrobes and en suite bathroom. The second floor comprises two more double bedrooms both with en suite bathrooms and good storage. Garage. Moments from Hyde Park and the delightful restaurants, shops and bars of Belgravia and Knightsbridge. Council Tax Band - G.



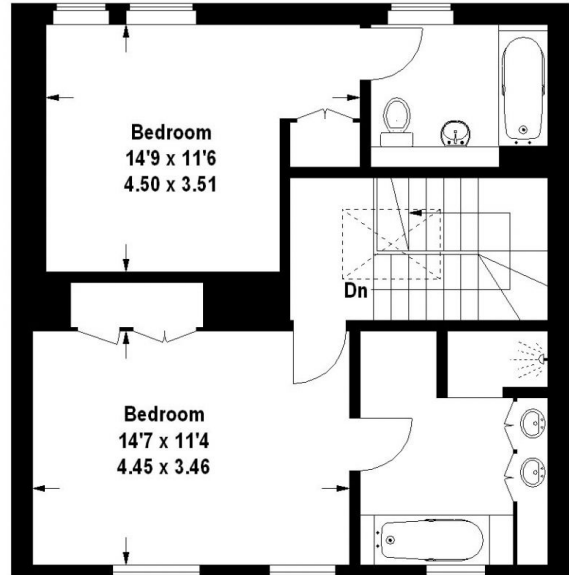
Viraj Patel MARLA
+44 7947 514483

Grosvenor Crescent Mews, SW1

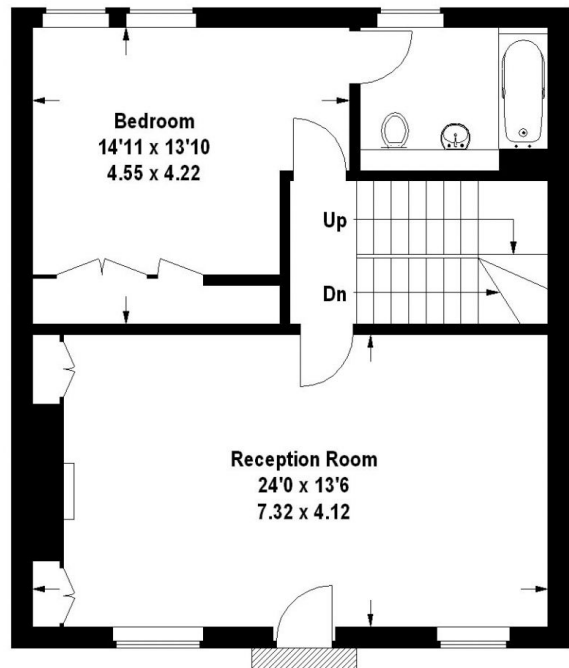
Approximate Gross Internal Area
 Ground Floor (Including Garage) = 72 sq m / 775 sq ft
 First Floor = 64 sq m / 689 sq ft
 Second Floor = 56 sq m / 603 sq ft
 Total = 192 sq m / 2067 sq ft



Ground Floor



Second Floor



First Floor

This plan is for layout guidance only. Not drawn to scale unless stated. Windows and door openings are approximate. Whilst every care is taken in the preparation of this plan, please check all dimensions, shapes and compass bearings before making any decisions reliant upon them. (ID 98470)