

## Abingdon Road London

5  3 

Ideal family house with flexible living space and a charming garden/patio. The property has lovely, raised ground floor with double drawing room as well as a fabulous kitchen/dining/family room situated on the lower ground floor with double doors opening onto the private garden area. In addition, there is an impressive family/media room on the basement floor. The bedroom accommodation is situated on first & second floors with a further bedroom on the basement floor and the study could also be used as the 5th bedroom. The stunning and good-sized family house blends ample living with a contemporary feel throughout. There is also excellent outside space having a garden in addition to a good-sized terrace. This lovely home is set in a cherry tree lined road conveniently located just South of Kensington High Street with all the transport and shopping that Kensington High St has to offer. Council Tax Band H. EPC Rating D.\*Some pictures have been edited using CGI.

**Building Size** : 2924 Sqft  
**View** : <https://www.rickmanproperties.com/7186334>



**Viraj Patel MARLA**  
**+44 7947 514483**

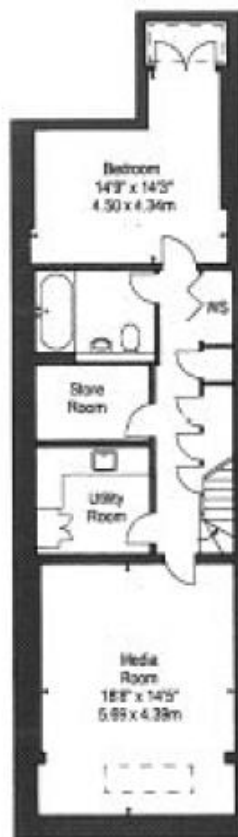


**Approx. Gross Internal Area**

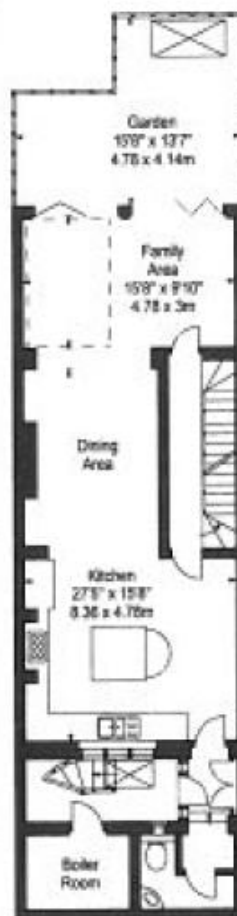
2,924 sq. ft. (271.64 sq. m)

(Excluding Boiler Room)

WS - Wine Store



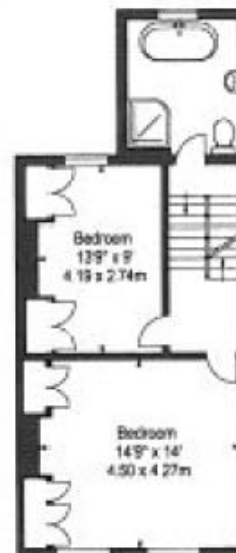
Basement



Lower Ground Floor



Raised Ground Floor



First Floor



Second Floor