



Redan Place Queensway

2  2 

A SPACIOUS 2 DOUBLE BEDROOMED apartment on the second floor (WITH LIFT) situated in a conveniently located modern building with porter, just moments from the Whiteley's shopping centre, currently being redeveloped as part of a multimillion-pound rejuvenation of the area. Bayswater underground station is close at hand, along with the many and varied shops and restaurants in the area. Comprising two double bedrooms, one having a ensuite shower room and further seperate family bathroom. RECEPTION ROOM WITH DINING AREA, and a MODERN fitted kitchen with all appliances. Underground PARKING is also provided. Long Lease, 999 years from 1999. EPC- C. Council tax band F. Service Charges approx £8500 per annum

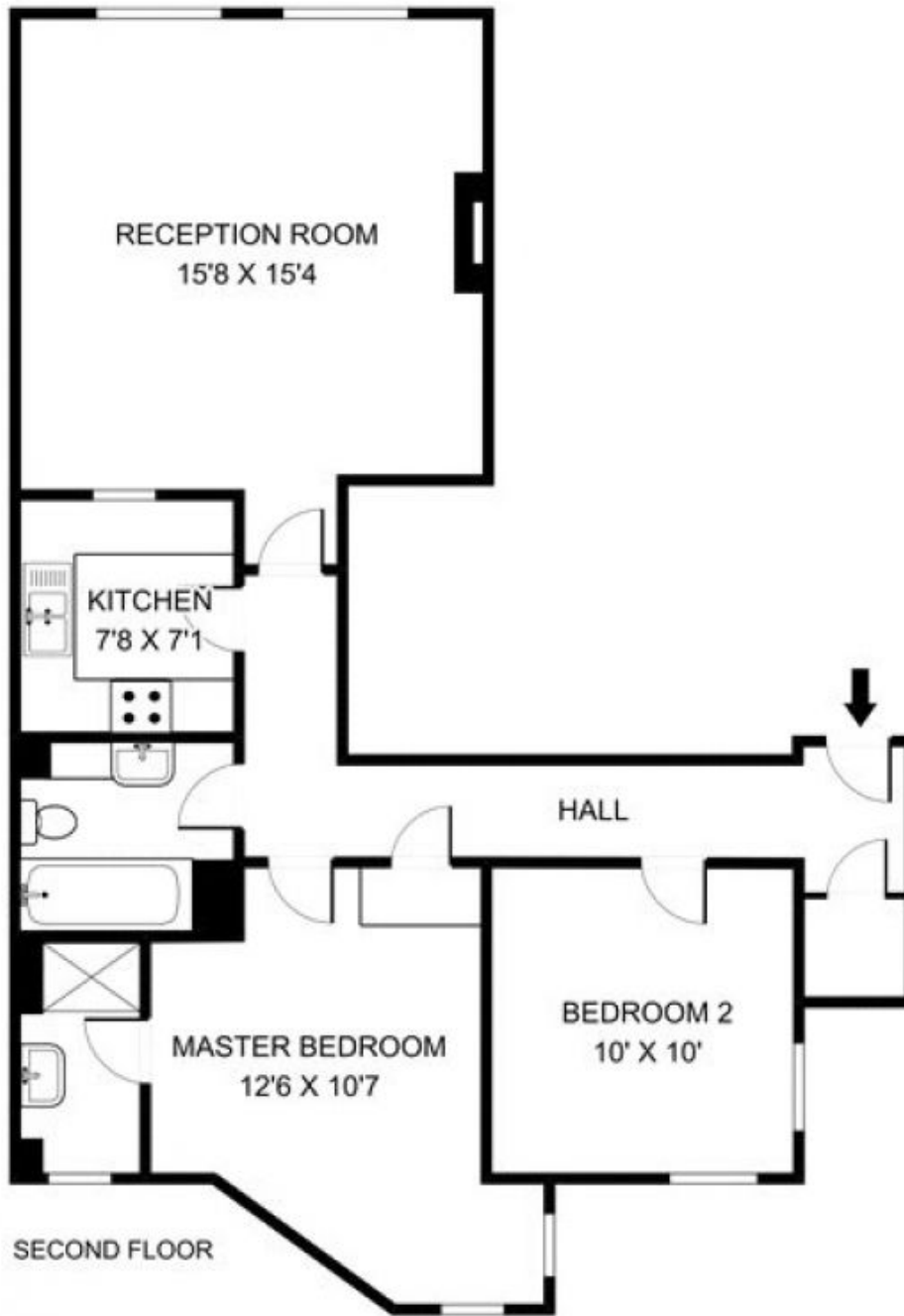
£ 825,000
Building Size : 745 Sqft
View : <https://www.rickmanproperties.com/7128153>



Stuart Mills
+44 7980 712798

REDAN PLACE, W2

Approx gross internal floor area: 69 sq m / 745 sq ft



Floor plan for illustration purposes only.