



## Lyall Mews Belgravia

Located in one of Belgravia's premier private Mews, this superbly presented 5 Bedroom Mews house is over 4 floors and extends to just under 4000 sq ft. Ideally positioned for the international amenities of Belgravia and Knightsbridge. Being on the island section of the mews, this discrete property is bright with windows to front and rear. Offering extensive reception space, with a first floor 30' dual aspect drawing room. 5 Double bedrooms, 5 ensuite bathroom/Shower rooms. Separate guest cloak room. 2 Kitchens, Dining Room, and Study. Air conditioning. Garage. Private Mews parking. EPC- D Council Tax Band H. City of Westminster. FREEHOLD Annual Mews service charge £1,000 approx

5 🏠 5 🚗

Offers around £7,950,000  
**Building Size** : 3841 Sqft  
**View** : <https://www.rickmanproperties.com/7128144>

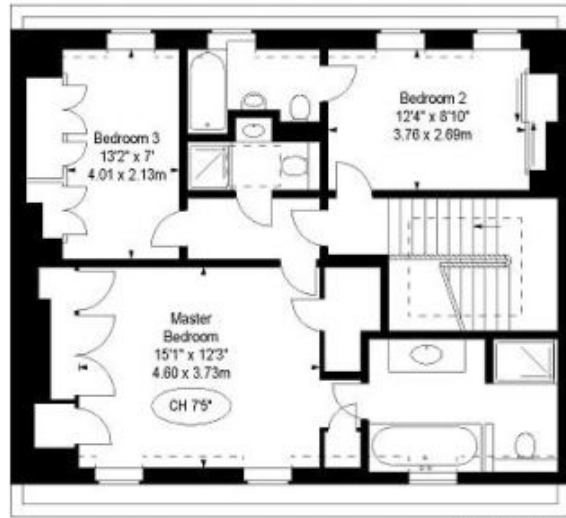


**Stuart Mills**  
**+44 7980 712798**

Approx. Gross Internal Area\*  
 3,841 Ft<sup>2</sup> - 356.84 M<sup>2</sup>  
 (including Entrance Lobby)

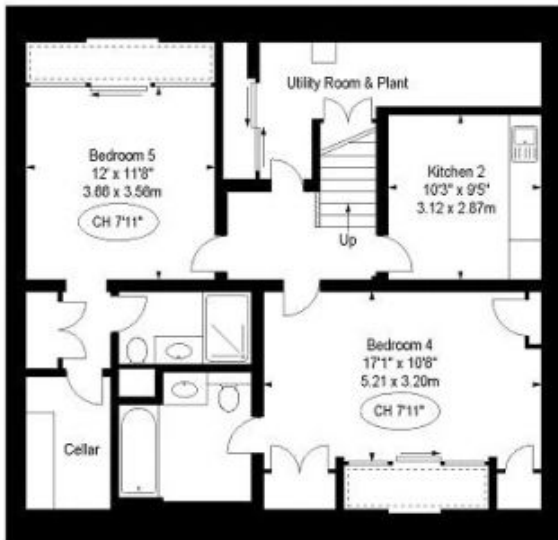


First Floor



Second Floor

Restricted Height



Basement Level



Ground Floor

CH - Ceiling Height