



Lyall Mews Belgravia

5 🏠 5 🚗

Well-presented Mews House in the Heart of Belgravia offering nearly 4,000 square feet of living space with extensive parking. The property has been fully modernised benefiting from air conditioning, lateral living room, five double bedrooms and five bathrooms/shower-room. The unusual dual aspect ensures the house is bathed in natural light. Garage and private parking to the front and rear of the property can accommodate up to four cars. Superbly located for the world-renowned amenities of Belgravia and Knightsbridge. Council Tax - H, EPC - D

£ 4,750 per week
Building Size : 3841 Sqft
View : <https://www.rickmanproperties.com/7128084>

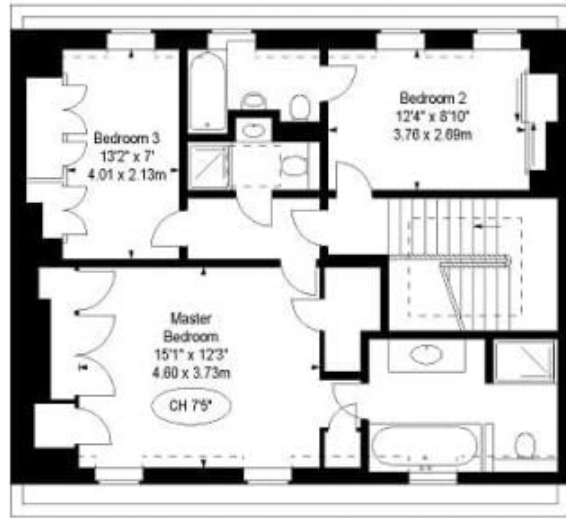


Viraj Patel MARLA
 +44 7947 514483

Approx. Gross Internal Area*
3,841 Ft² - 356.84 M²
(including Entrance Lobby)

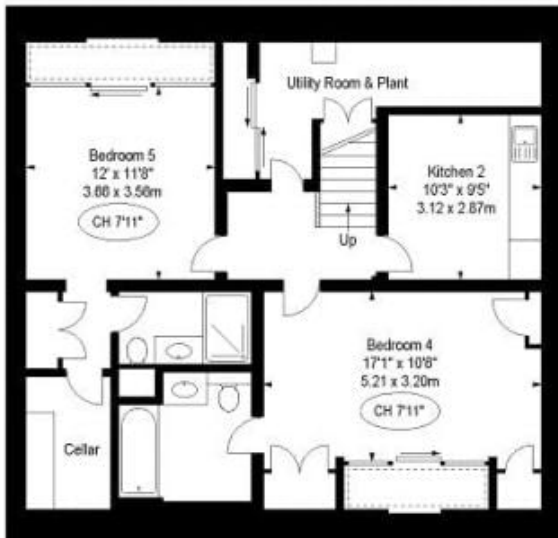


First Floor



Second Floor

Restricted Height



Basement Level



Ground Floor

CH - Ceiling Height