

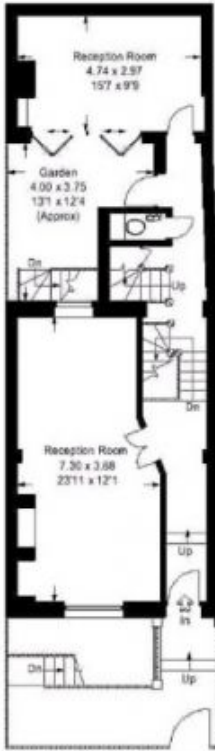
Kensington Court Place Kensington UK

3  2 

An attractive family house in central Kensington, just south of the High Street. The property is spread over four floors, each being well laid out. Comprising, double reception room on the raised ground floor, and to the rear a separate room that could be used as a study/playroom/or additional bedroom. This rear room has direct access to the garden/patio. Also on this level is the guest cloakroom. The lower ground floor has a spacious kitchen/breakfast room, again with access to the garden/patio, and a separate utility room. Outside at the front of the property is a vault providing storage. Separate entrance to allow direct access from the front garden. The first floor has 2 double bedrooms and family bathroom. Top floor with principal bedroom, ensuite bathroom and walk in dressing area. There is also a hatch to a loft area, providing additional storage. EPC Rating E. Freehold.Council Tax Band - H.

Building Size : £ 2,950,000
View : 1921 Sqft
<https://www.rickmanproperties.com/7128038>

Approx. Gross Internal Area -
179 sq m / 1931 sq ft



Raised Ground Floor



First Floor



Second Floor



Lower Ground Floor



= Reduced headroom
below 1.5 m / 5 ft