



Lexham Gardens Kensington

2  1 

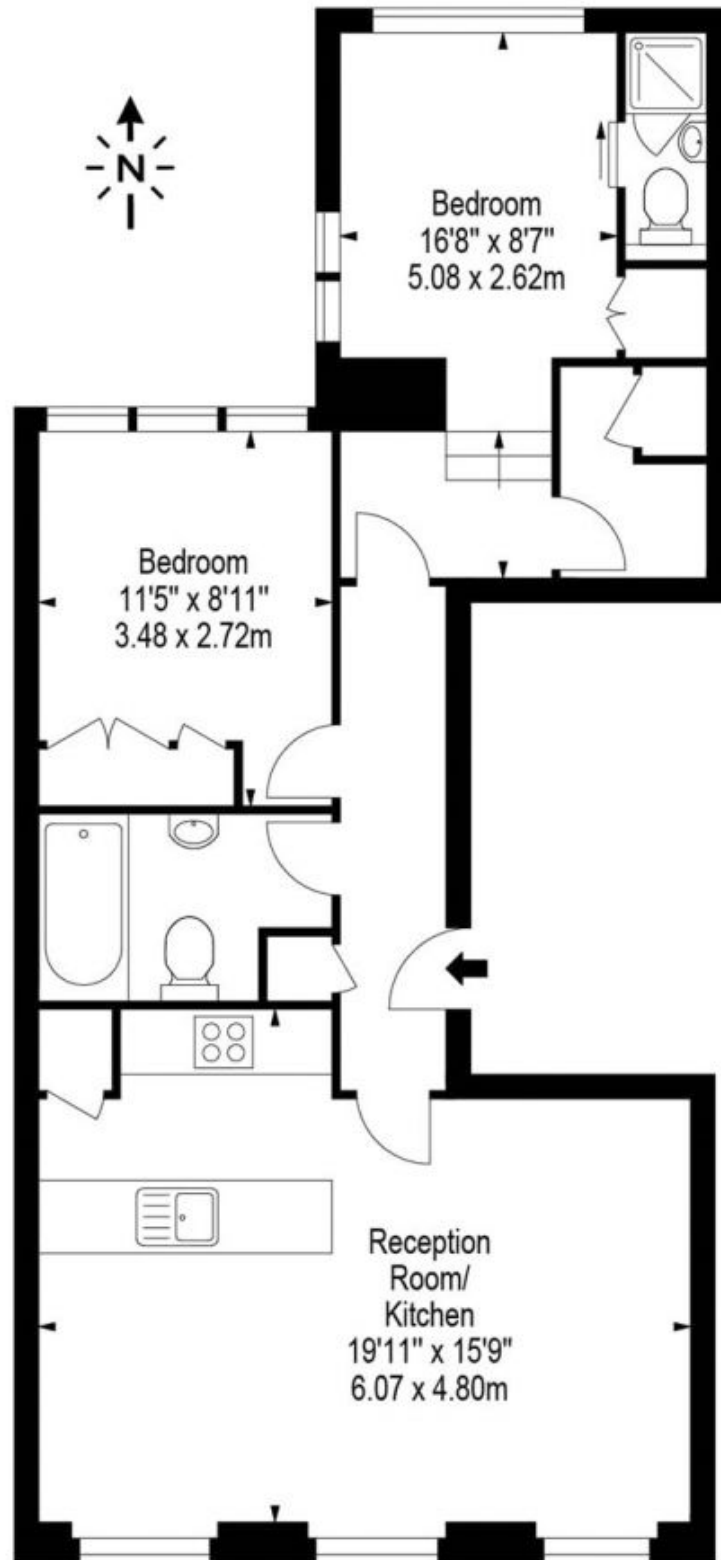
Bright apartment in this well-maintained residential building in Kensington. The property is located on the 3rd floor (no lift) and comprises two double bedrooms, two bathrooms (one en-suite), spacious open plan kitchen reception room and good storage throughout. Conveniently located only moments from Kensington High Street, Holland Park, and Earls Court tube station. Ideal for a professional couple, respectable sharers, or house-proud students. EPC - D, Council Tax - F.

Building Size : 718 Sqft
View : <https://www.rickmanproperties.com/7128017>



Viraj Patel MARLA
+44 7947 514483

Lexham Gardens, W8



Third Floor

Approx Gross Internal Area **700 Sq Ft - 65.03 Sq M**

Floor Plan Supplied For Identification Purposes Only And May Not Be Accurate
Floor Plan by www.elegantmediasolution.com