



Harcourt Terrace Chelsea

2  2 

Spacious two double bedroom garden apartment in the heart of Chelsea, situated on the lower ground floor of this attractive period building. The flat benefits from a large private garden with French doors, fully fitted kitchen, two double bedrooms and two bathrooms (one en-Suite). Harcourt Terrace is only a short walk from Hollywood Road and Fulham Road with their wide variety of lively restaurants, bars and shops. The property is also within close proximity to Earls Court or Gloucester Road underground stations (Circle, District, Piccadilly lines) as well as plenty of central London bus routes along Fulham Road. *The flat is offered on an UNFURNISHED basis.

Building Size : 1273 Sqft
View : <https://www.rickmanproperties.com/7128015>

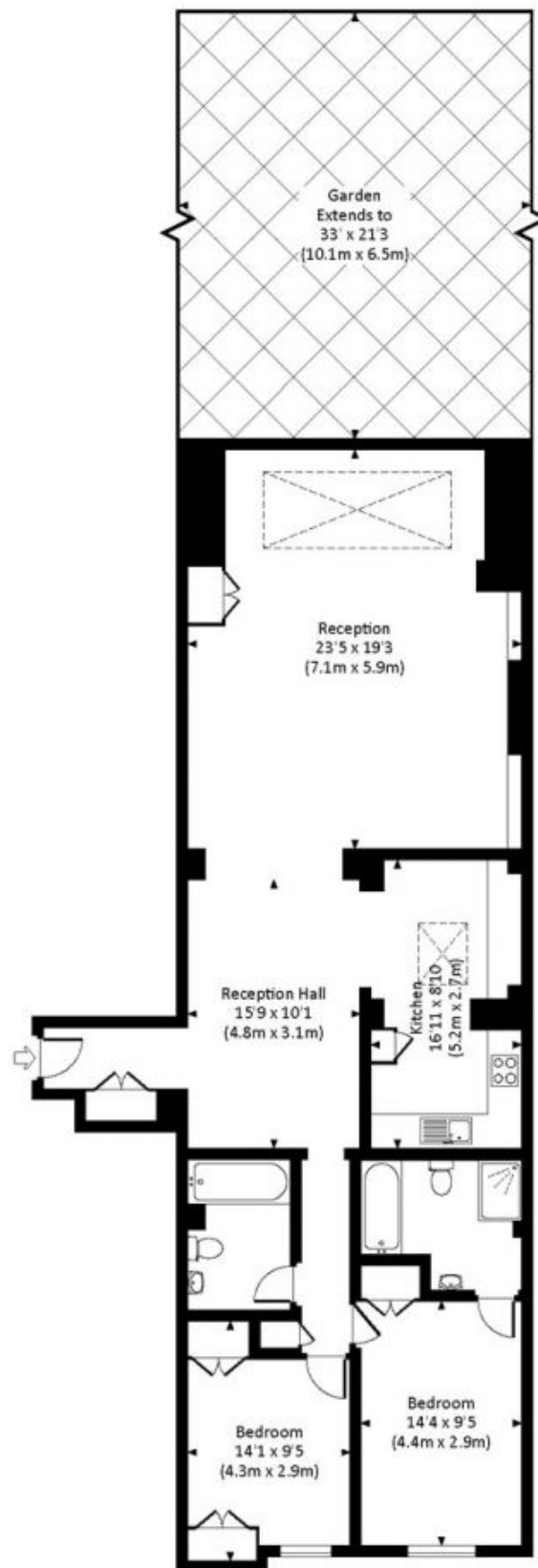


Viraj Patel MARLA
+44 7947 514483

HARCOURT TERRACE, SW10

Approx. gross internal area

1273 Sq Ft. / 118.3 Sq M.



RAISED GROUND FLOOR



All measurements have been made in accordance with RICS Code of Measuring Practice which are approximate only and only for illustrative purposes. For the avoidance of doubt, Dowling Jones Design shall not be liable for any reliance on these measurements. © 2016 www.dowlingjones.com 020 7610 9933