



Consort House Queens Gate London

3  2 

A charming three double bedroom apartment on the first floor (with lift) of a well-maintained period conversion. The property consists of two bedrooms, two bathroom (1x en-suite), spacious reception room leading onto private balcony and fully fitted kitchen. The property further benefits from air conditioning, high ceilings, wooden flooring in living areas and porter. The flat is conveniently located within one of the most sought-after streets of Kensington and Chelsea only a short walk from Hyde Park and the Royal Albert Hall and the world-famous museums. EPC - F, Council Tax Band - G.

£ 1,075 per week

Building Size : 1081 Sqft

View : <https://www.rickmanproperties.com/7128003>



Viraj Patel MARLA
+44 7947 514483

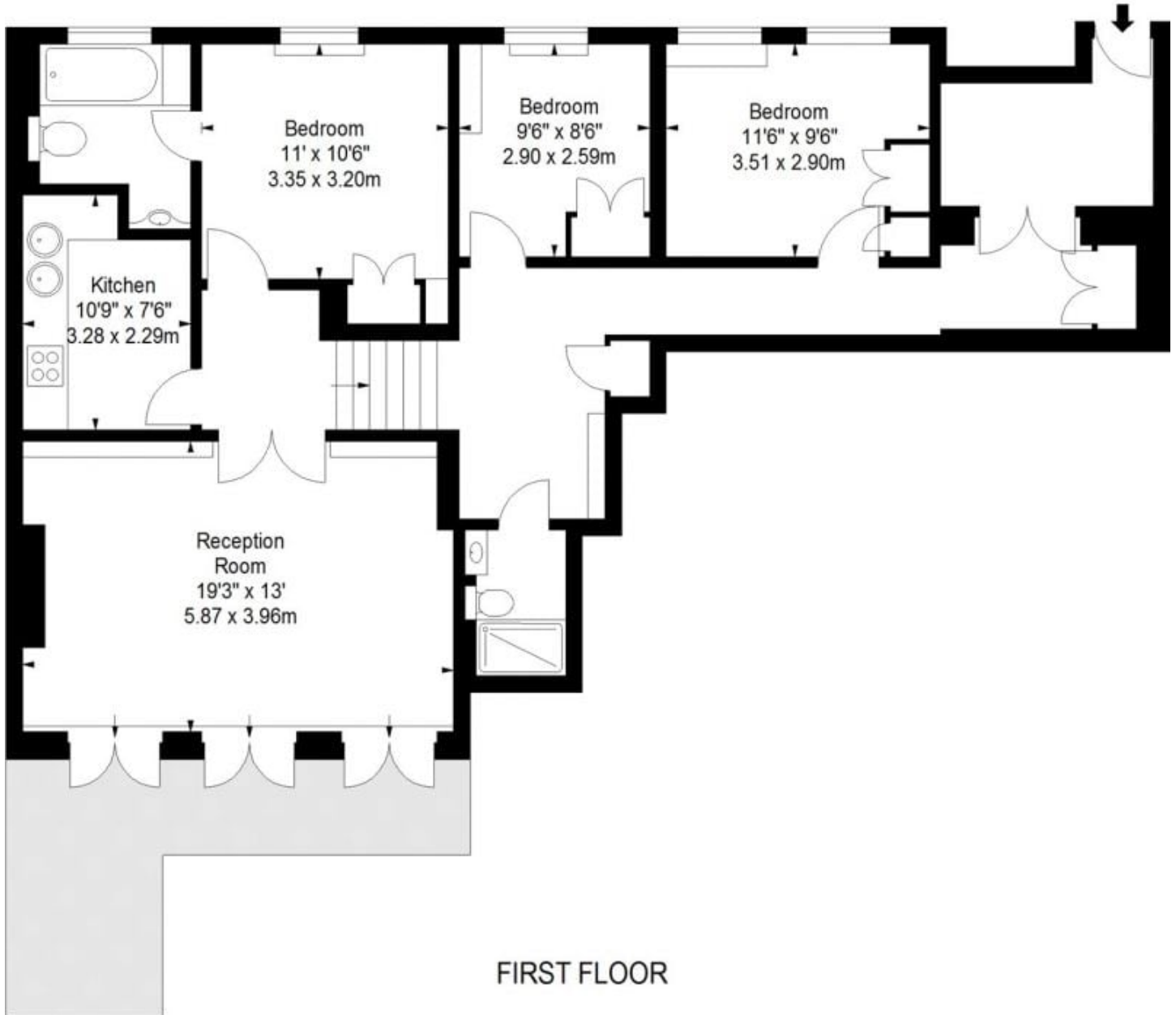
FLAT 6 45 QUEENS GATE SW7

APPROX. GROSS INTERNAL AREA *
1081 Ft² - 100.42 M²



Illustration For Identification Only, Not to Scale
All Calculations include Any/All Areas Under 1.6m Head Height.

* As Defined by RICS - Code of Measuring Practice



FIRST FLOOR

BKR

www.bkrfloorplans.co.uk

T: 0846 267 2023

© BKR 2012