



Egerton Gardens Mews Knightsbridge

2  2 

Nestled in the heart of the prestigious and sought-after neighbourhood of Knightsbridge, this elegant 2-bedroom mews house offers a harmonious blend of contemporary design and classic charm. Located in a tranquil and private mews setting, this exquisite property provides the perfect retreat from the bustling city while being just moments away from all the amenities and attractions that Knightsbridge has to offer. Council Tax - G, EPC - C

£ 1,150 per week

Building Size : 996 Sqft

View

: <https://www.rickmanproperties.com/7127909>

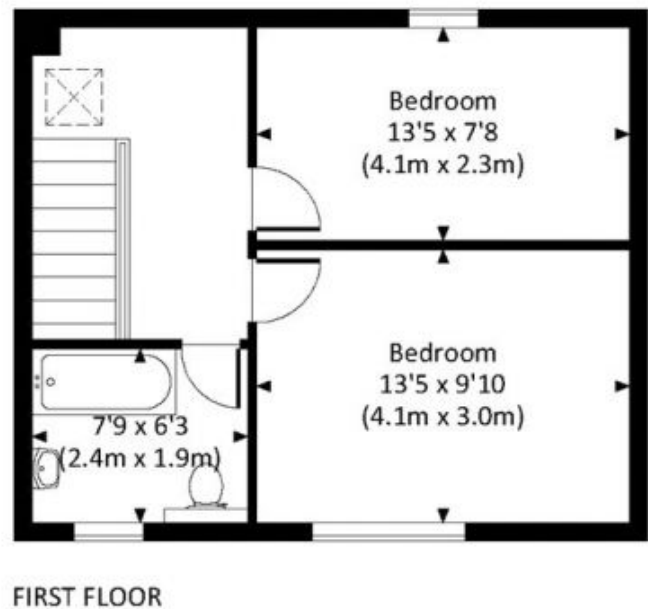
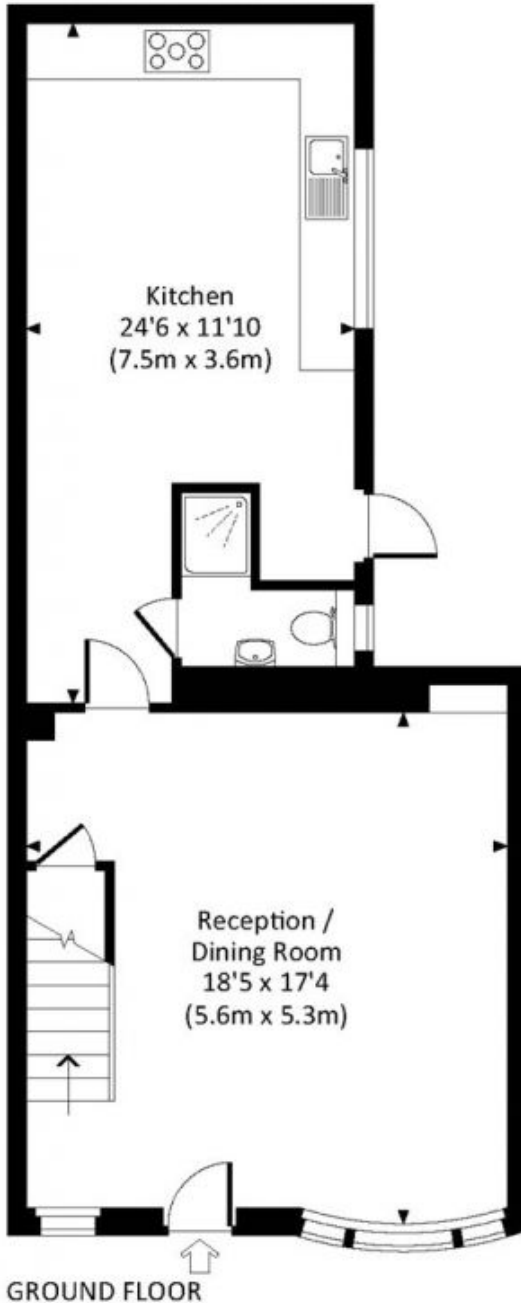


Viraj Patel MARLA
+44 7947 514483

EGERTON GARDEN MEWS, SW3

Approx. gross internal area

996 Sq Ft. / 92.5 Sq M.



All measurements have been made in accordance with RICS Code of Measuring Practice which are approximate only and only for illustrative purposes. For the avoidance of doubt, Dowling Jones Design shall not be liable for any reliance on these measurements. © 2019 www.dowlingjones.com 020 7610 9933