



223 Brompton Road Knightsbridge

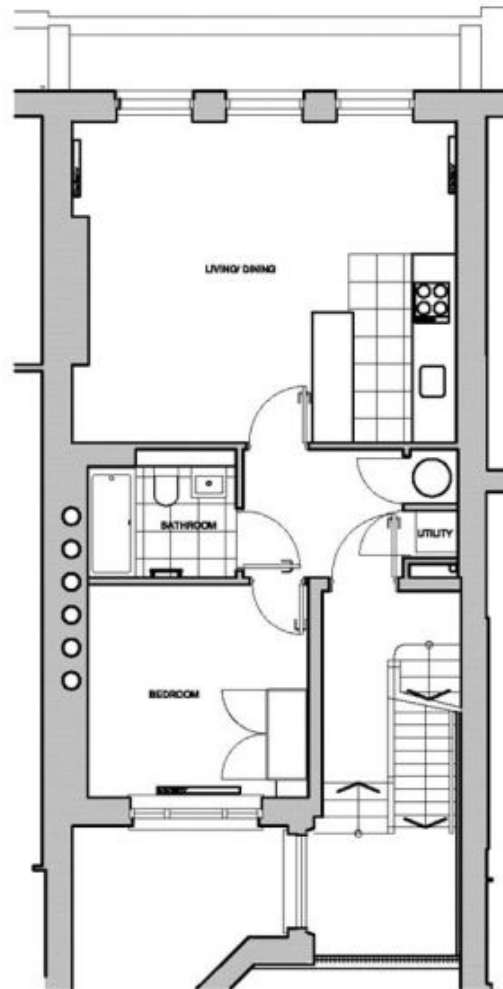
1  1 

Boasting a contemporary design and an array of high-end finishes, this residence combines style, comfort, and convenience in one elegant package. The property consist of a double bedroom with ample storage, bathroom, open plan kitchen with modern appliances and reception room. The flat is neutrally decorated throughout and benefits from wooden flooring in the light-filled reception room. It is ideally located for access to the amenities and transportation of Knightsbridge as well as South Kensington. EPC - B, Council Tax - D

Building Size : 505 Sqft
View : <https://www.rickmanproperties.com/7127880>



Viraj Patel MARLA
+44 7947 514483



FLAT AREA : 46.9 SQ.M

FLAT 1 - 1st FLOOR
223 BROMPTON ROAD
LONDON SW3

SCALE 1:100 @ A4 SIZE