



### Egerton Gardens Mews Knightsbridge

1  1 

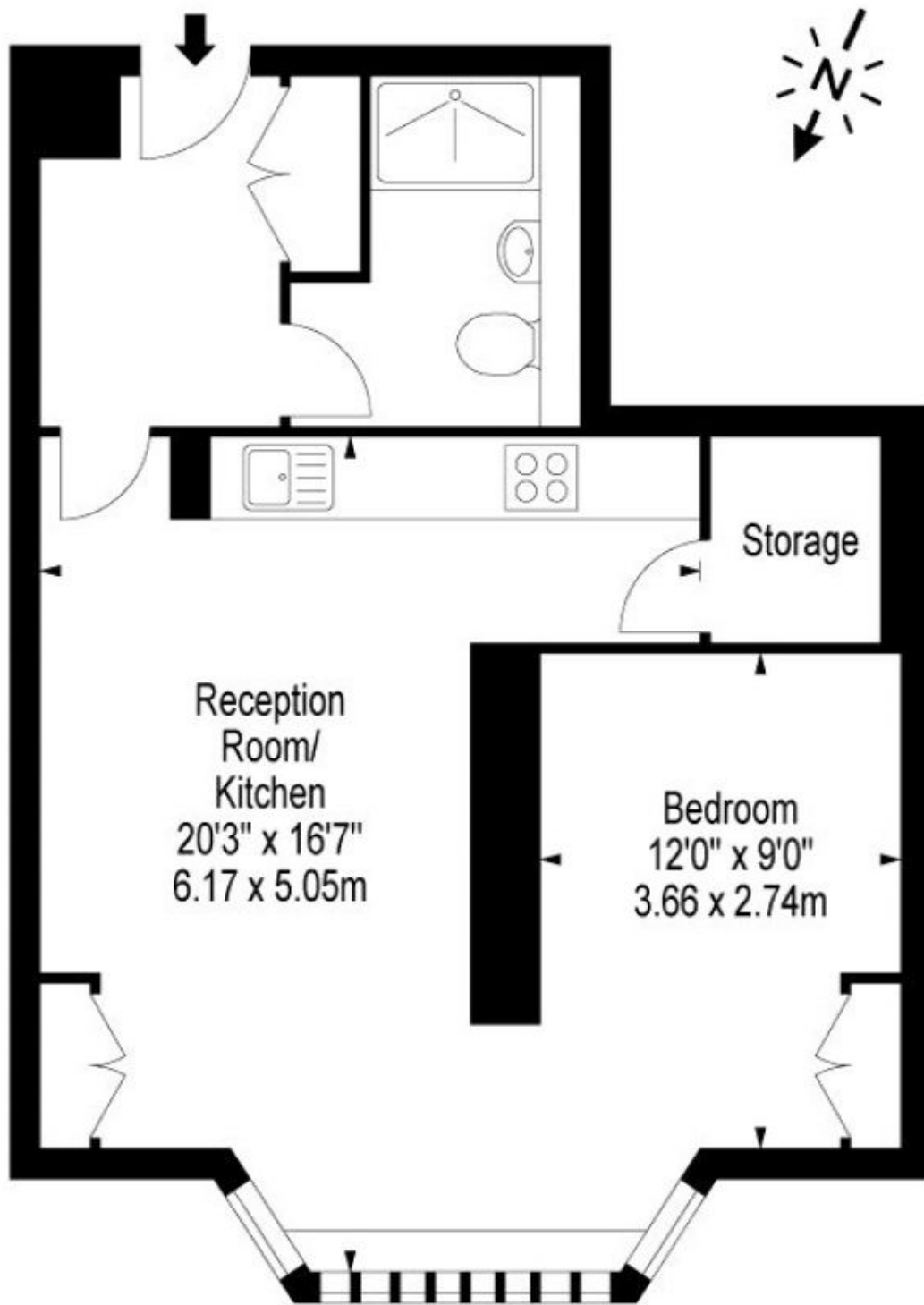
A delightful and modern first floor apartment (no lift) within this unique mews in the heart of Knightsbridge. The property consists of an open plan bedroom area, family bathroom, reception room and a fully fitted open plan kitchen. The property is presented in excellent condition and benefits from wooden flooring throughout with contemporary furnishings. Egerton Gardens Mews is conveniently located minutes away from the many shopping and transport facilities of Knightsbridge and South Kensington.

**Building Size** : 512 Sqft  
**View** : <https://www.rickmanproperties.com/7127803>



**Viraj Patel MARLA**  
**+44 7947 514483**

# Egerton Gardens Mews SW3



First Floor

**Approx Gross Internal Area 512 Sq Ft - 47.56 Sq M**

Floor Plan Supplied For Identification Purposes Only And May Not Be Accurate  
Floor Plan by [www.elegantmediasolution.com](http://www.elegantmediasolution.com)