

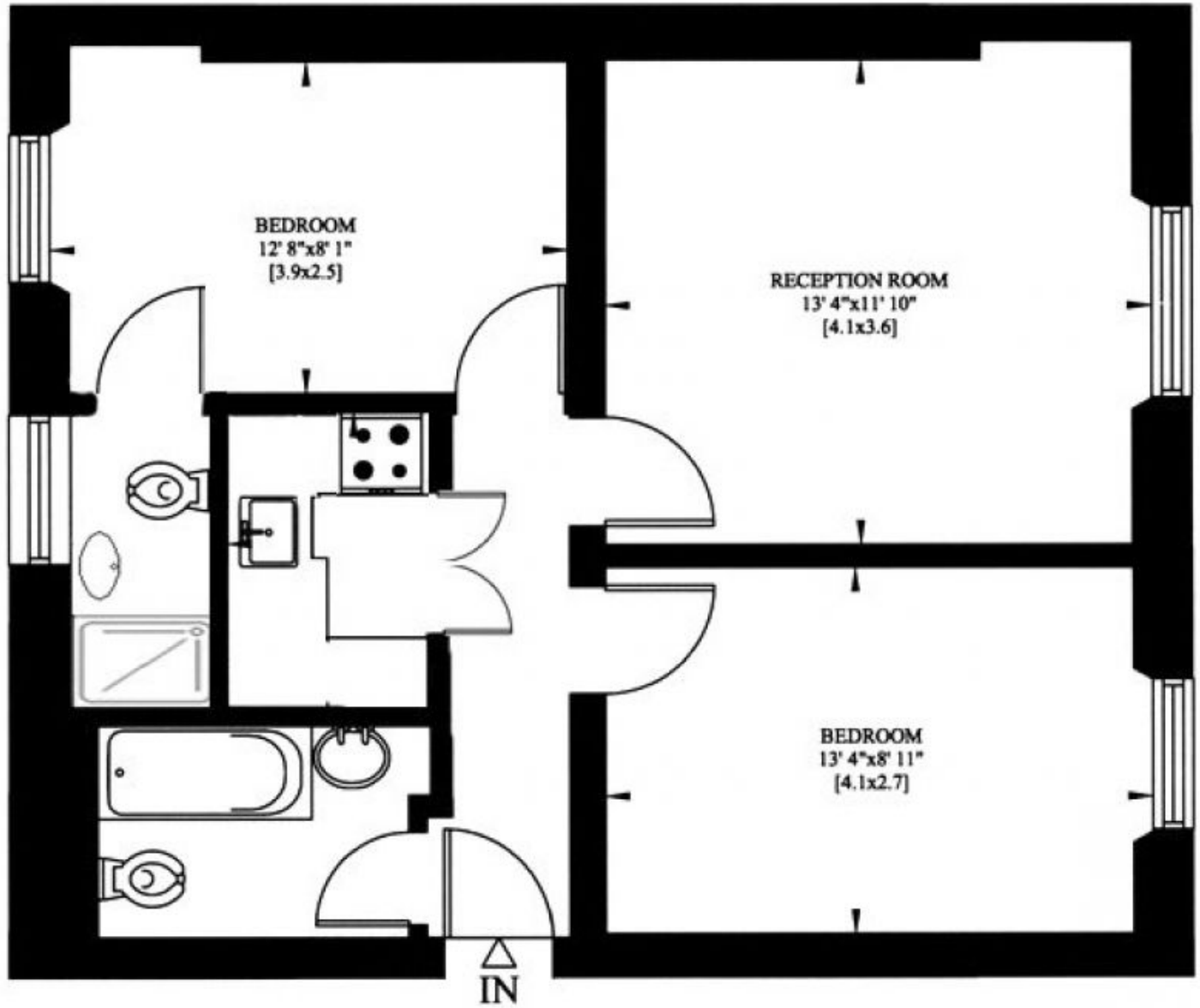
Pater Street Kensington London

2  2 

A light two bedroom apartment situated on the 4th floor (with lift) of this convenient mansion block only moments from Kensington High Street. This well proportioned flat features an entry phone and lift, a south facing reception room, two double bedrooms, kitchen and two bathrooms. The flat would make an ideal first purchase, rental investment or pied a terre. High Street Kensington and Earl's Court underground stations are nearby, as are excellent bus routes. The green open spaces of Holland Park are around the corner. Council Tax - E, EPC - D

Asking Price £600,000
Building Size : 570 Sqft
View : <https://www.rickmanproperties.com/7127755>

Gross Internal Area: 53 Sq. metres
570 Sq. feet



FOURTH FLOOR