



Egerton Gardens Knightsbridge

2  1 

INCLUSIVE OF HOT WATER & HEATING BILLS A well-presented third floor apartment (no lift) in this popular street in the heart of Knightsbridge. The property consists of two double bedrooms, family bathroom, reception room and a fully fitted, open plan kitchen. Egerton Gardens is well located moments from the many shopping and transport amenities of Knightsbridge/South Kensington. EPC Rating C. Council Tax Band G

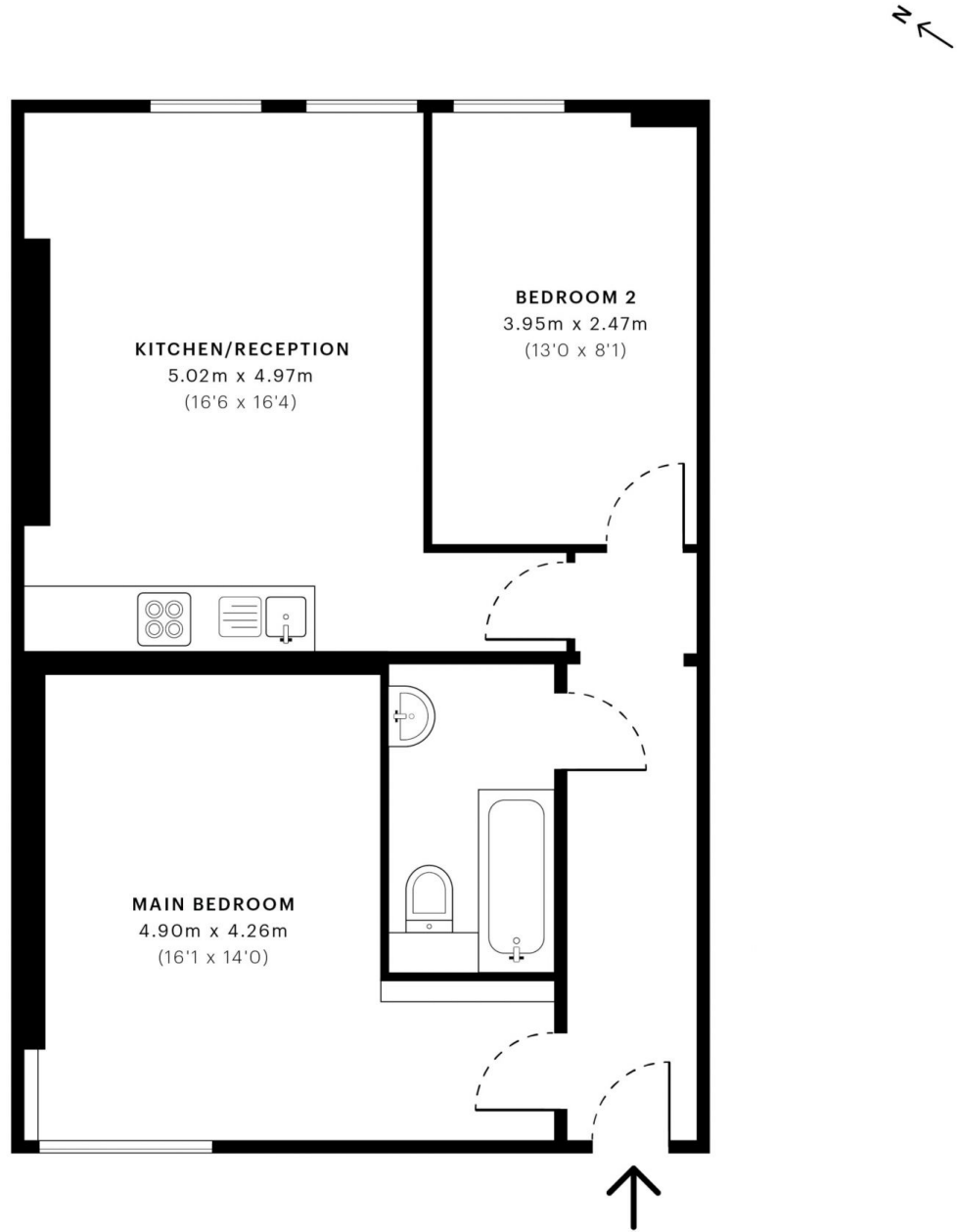
£ 750 per week

Building Size : 634 Sqft

View : <https://www.rickmanproperties.com/7127675>



Viraj Patel MARLA
+44 7947 514483



— Third Floor

GROSS INTERNAL AREA (GIA)
The footprint of the property
58.92 sqm / 634.21 sqft

NET INTERNAL AREA (NIA)
Excludes walls and external features
Includes washrooms, restricted head height
54.59 sqm / 587.60 sqft

EXTERNAL STRUCTURAL FEATURES
Balconies, terraces, verandas etc.
0.00 sqm / 0.00 sqft

RESTRICTED HEAD HEIGHT
Limited use area under 1.5 m
0.00 sqm / 0.00 sqft



Spec Verified floor plans are produced in accordance with Royal Institution of Chartered Surveyors' Property Measurement Standards. Plots and gardens are illustrative only and excluded from all area calculations. Due to rounding, numbers may not add up precisely. All measurements shown for the individual room lengths and widths are the maximum points of measurements captured in the scan.

IPMS 3B RESIDENTIAL 57.96 sqm / 623.88 sqft
IPMS 3C RESIDENTIAL 54.99 sqm / 591.91 sqft

SPEC ID 563f354431795620de66e3d8d