



Holland Road Holland Park

2  1 

Located on the first floor of a period building, this generous lateral flat being nearly 1100 sq ft, and maybe a blank canvass for the creative minded buyer. Currently laid out with 2 double bedrooms, reception room, dining kitchen and bathroom, plus a large entrance hall. The property offers scope for alteration (subject to consents), with various options, perhaps changing to a 3 bed, 2 bath arrangement or even creating 2 smaller units. Or, you can just enjoy a great spacious apartment. The flat has high ceilings and plenty of light. The property has a long lease, at over 990 years, plus share of freehold. Council tax band F, EPC - E. Service Charge as advised by the seller £2300 per annum. No onward Chain.

Guide Price £900,000

Building Size : 1076 Sqft

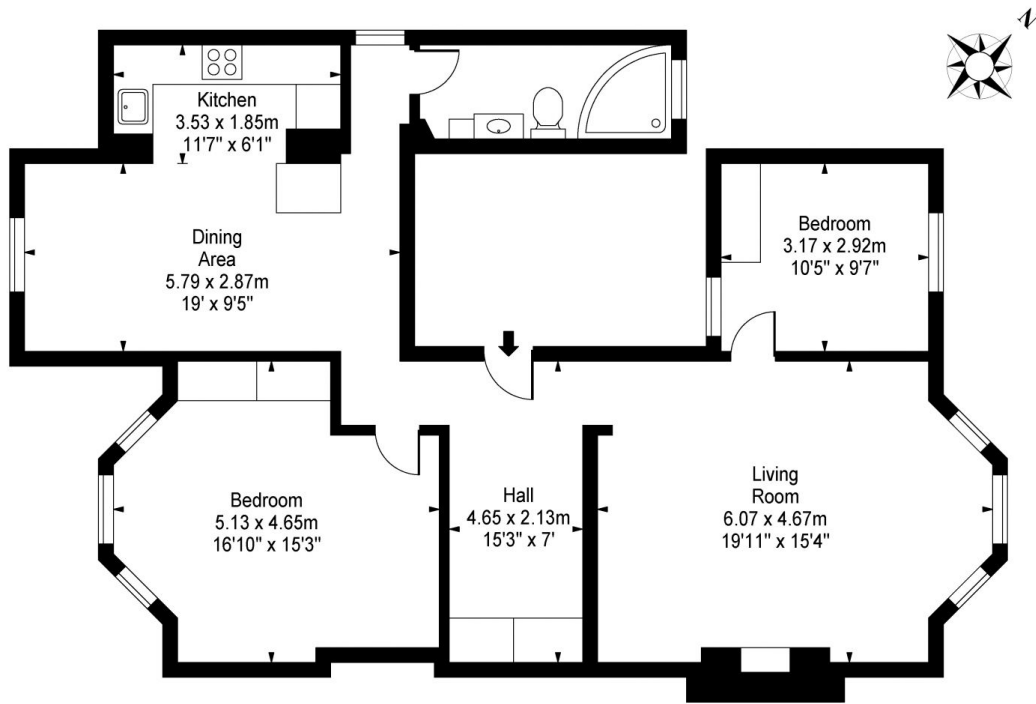
View

: <https://www.rickmanproperties.com/7127645>



Nikolai Rudin
+44 7946 343719

Holland Road, W14



First Floor

Approx Gross Internal Area 1073 Sq Ft - 99.68 Sq M

This floor plan should be used as a general outline for guidance only and does not constitute in whole or in part an offer or contract. Any intending purchaser or lessee should satisfy themselves by inspection, searches, enquiries and full survey as to the correctness of each statement. Any areas, measurements or distances quoted are approximate and should not be used to value a property or be the basis of any sale or let.